

BIG LOTS PLAZA

1731 N ROBERTS AVE | LUMBERTON, NC 28358



CONTACT

CARLA TREPPER
carla@chambers-group.com
(919) 900-2201

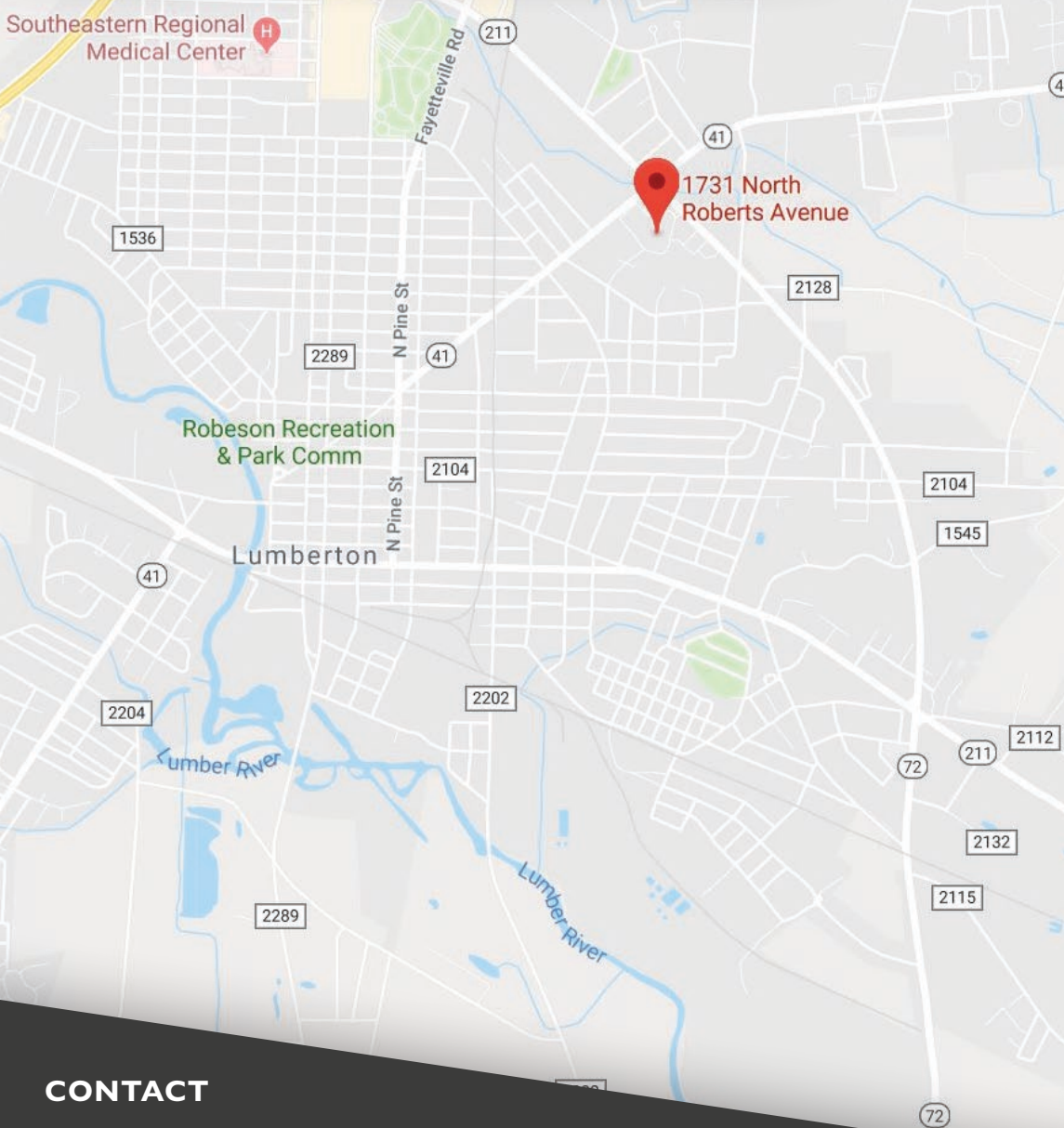


BIG LOTS PLAZA

1731 N ROBERTS AVE | LUMBERTON, NC 28358

PROPERTY OVERVIEW

Southeastern Regional
Medical Center



PROPERTY DETAILS

- 35,748 SF Retail Space for Lease
- 89,260sf Neighborhood Shopping Center
- Co-tenancy includes Citi Trends, Fresh Foods, and For U Beauty
- Located at the intersection of N. Roberts Avenue and E. Elizabeth Rd.
- In close proximity to I-95 and Lumberton Municipal Airport
- N. Roberts Avenue - 24,000 VPD

MARKET DETAILS





Lumberton is a city in Roberson County, North Carolina, the largest county in the state by land area. Situated in Southeastern North Carolina on I-95, Lumberton is the midpoint between New York and Florida.

The city is full of history, culture and fun with the Riverwalk near Historic Downtown and the Lumber River, voted one of NC's Top Ten Natural Wonders.

It is a popular area for traveling tourists and retirees, designated the first Certified Retirement Community in NC.

The city provides affordable housing, excellent medical care, moderate climate, natural beauty, entertainment, historic and cultural attractions, recreation, and proximity to the beach, mountains, and golf courses.

DEMOGRAPHICS

	1 MILE	3 MILE	5 MILE
 POPULATION	2,196	18,207	31,571
 AVG. HH INCOME	\$39,818	\$46,380	\$53,130
 HOUSEHOLDS	814	7,116	11,766
 EMPLOYEES	807	10,880	21,907

CONTACT

CARLA TREPPER
carla@chambers-group.com
(919) 900-2201

XTEAM
RETAIL ADVISORS


THE CHAMBERS GROUP
ACCELERATING RETAIL SUCCESS™

BIG LOTS PLAZA

1731 N ROBERTS AVE | LUMBERTON, NC 28358

SITE PLAN



TENANT ROSTER

SUITE	TENANT	SF
1	AVAILABLE	35,748
2	Citi Trends	24,255
3	Fresh Foods	22,260
4	For U Beauty	7,000

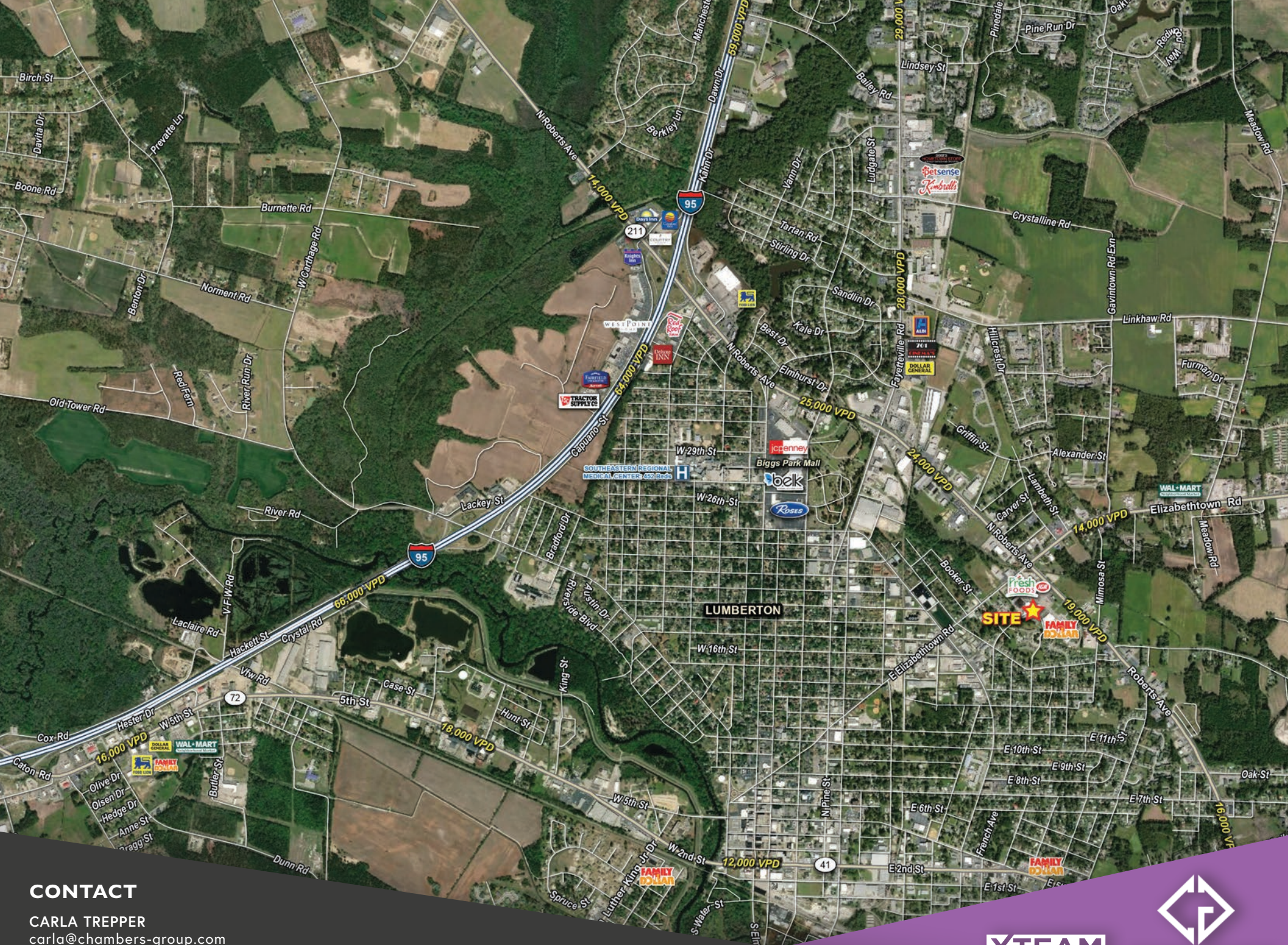
CONTACT

CARLA TREPPER
carla@chambers-group.com
(919) 900-2201

XTEAM
RETAIL ADVISORS



THE CHAMBERS GROUP
ACCELERATING RETAIL SUCCESS™



CONTACT

CARLA TREPPER
 carla@chambers-group.com
 (919) 900-2201



THE CHAMBERS GROUP
 ACCELERATING RETAIL SUCCESS™