

SHOPPES ON HARRISON

329 N. HARRISON AVENUE | CARY, NC 27513

RETAIL FOR LEASE



CONTACT

CARLA TREPPER
carla@chambers-group.com
(919) 900-2201

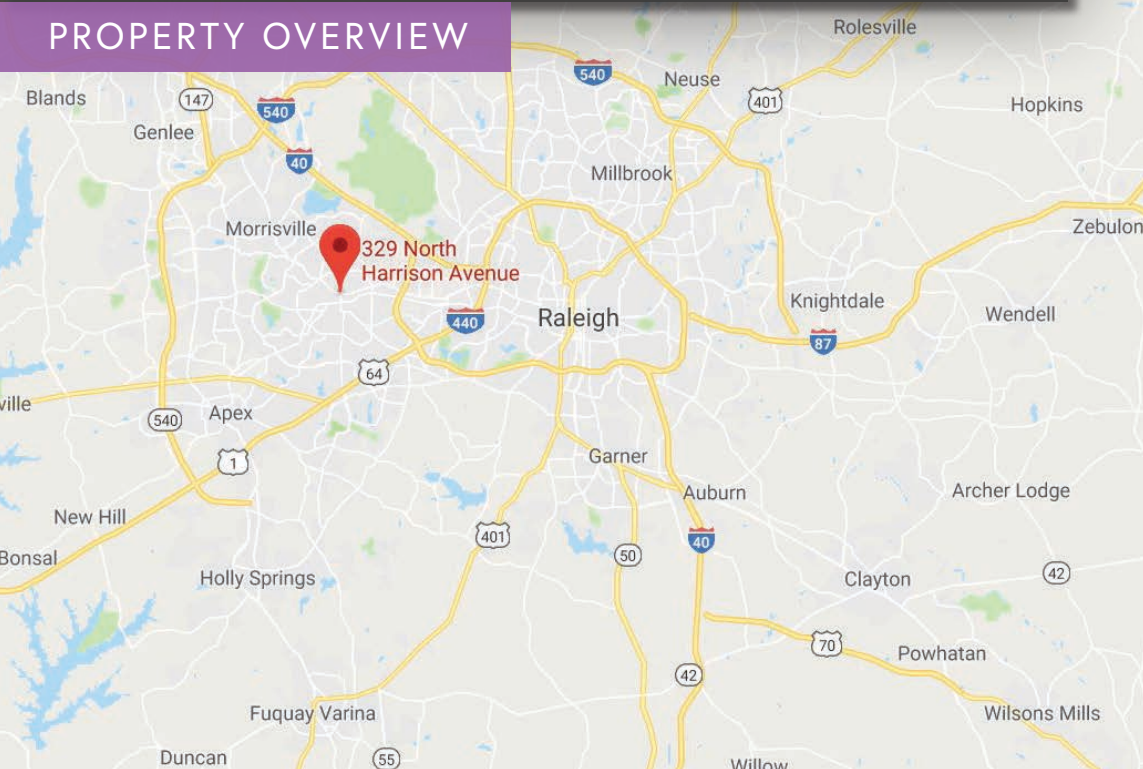
XTEAM
RETAIL ADVISORS


THE CHAMBERS GROUP
ACCELERATING RETAIL SUCCESS™

SHOPPES ON HARRISON

329 N. HARRISON AVENUE | CARY, NC 27513

PROPERTY OVERVIEW



CONTACT

CARLA TREPPER
carla@chambers-group.com
(919) 900-2201

PROPERTY DETAILS

- Centrally positioned in growing Downtown Cary
- Located on N. Harrison Ave. between the Chapel Hill Rd. and W. Chatham St. intersection
- Center is a short walk from Cary Town Hall and numerous residential developments, including a mixed-use complex 400 yards away
- Strong mix of tenants and uses provide both daytime and evening traffic
- N. Harrison Ave. - 16,000 VPD
- W. Chatham St. - 14,000 VPD




MARKET DETAILS

Located in the heart of the Research Triangle area, Cary is surrounded by a variety of small towns and big cities, all of which have their own charm and must-see spots. Cary is the seventh-largest municipality in North Carolina and the third-largest municipality in The Triangle after Raleigh and Durham. Cary is the second most populous incorporated town in the United States and is the largest town statewide.

Cary is consistently ranked in the top ten "BEST OF" categories:

- #6 Best Place to Live in America
- #4 Safest City in North Carolina
- #3 City Where Education Pays Off The Most
- #4 Best U.S. Real Estate Market
- #2 Most Livable Mid-Sized City in the U.S.

DEMOGRAPHICS

	1 MILE	3 MILE	5 MILE
 POPULATION	10,796	84,981	180,480
 AVG. HH INCOME	\$82,189	\$99,411	\$109,762
 EMPLOYEES	5,621	43,221	116,857

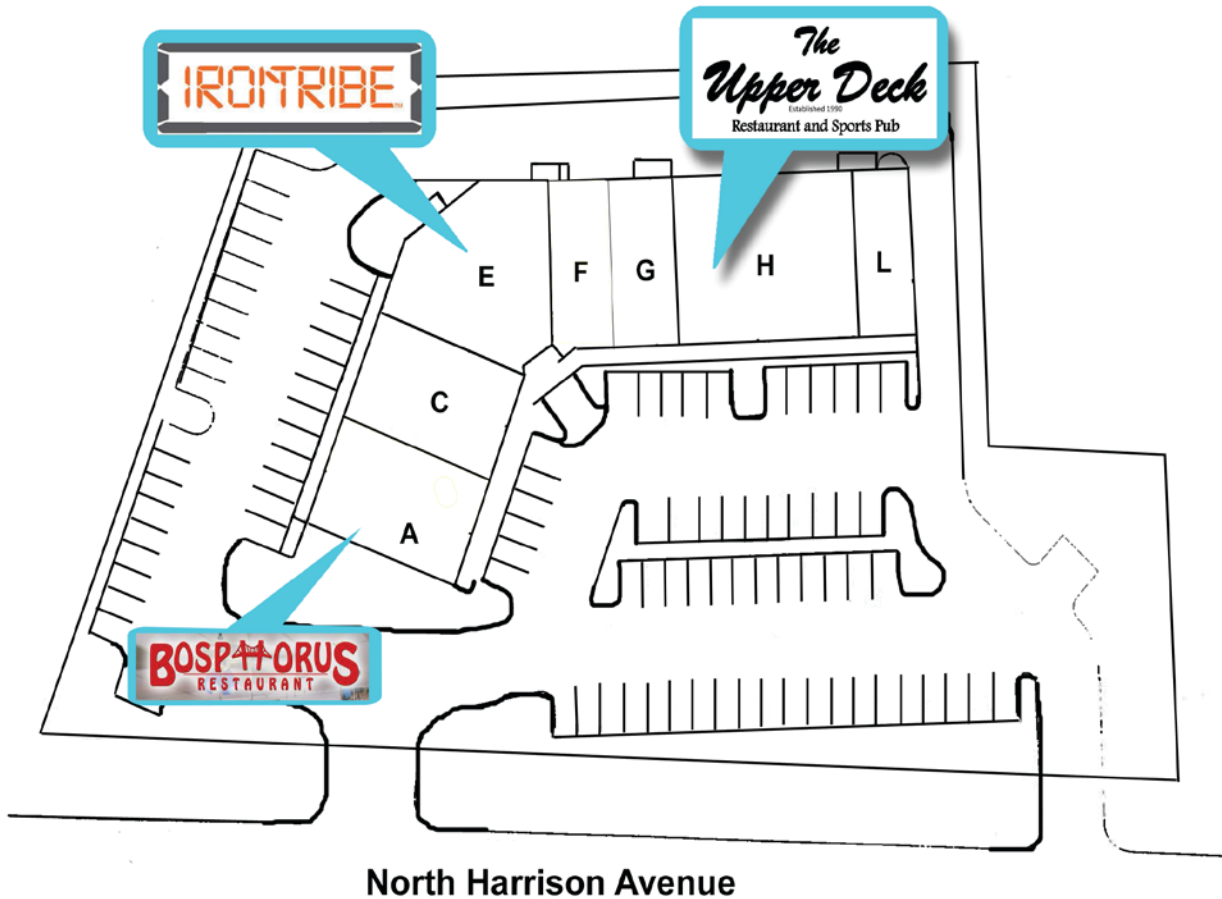
XTEAM
RETAIL ADVISORS


THE CHAMBERS GROUP
ACCELERATING RETAIL SUCCESS™

SHOPPES ON HARRISON

329 N. HARRISON AVENUE | CARY, NC 27513

SITE PLAN



TENANT ROSTER

SUITE	TENANT	SF
A	Bosphorous Restaurant	2,440
C	Logos Jiu Jitsu	2,440
E	Iron Tribe Fitness	3,393
F	Paymore Electronic Repair	1,220
G	Cozy Cat	1,220
H	Upper Deck	4,880
L	Advanced Cleaners	1,220

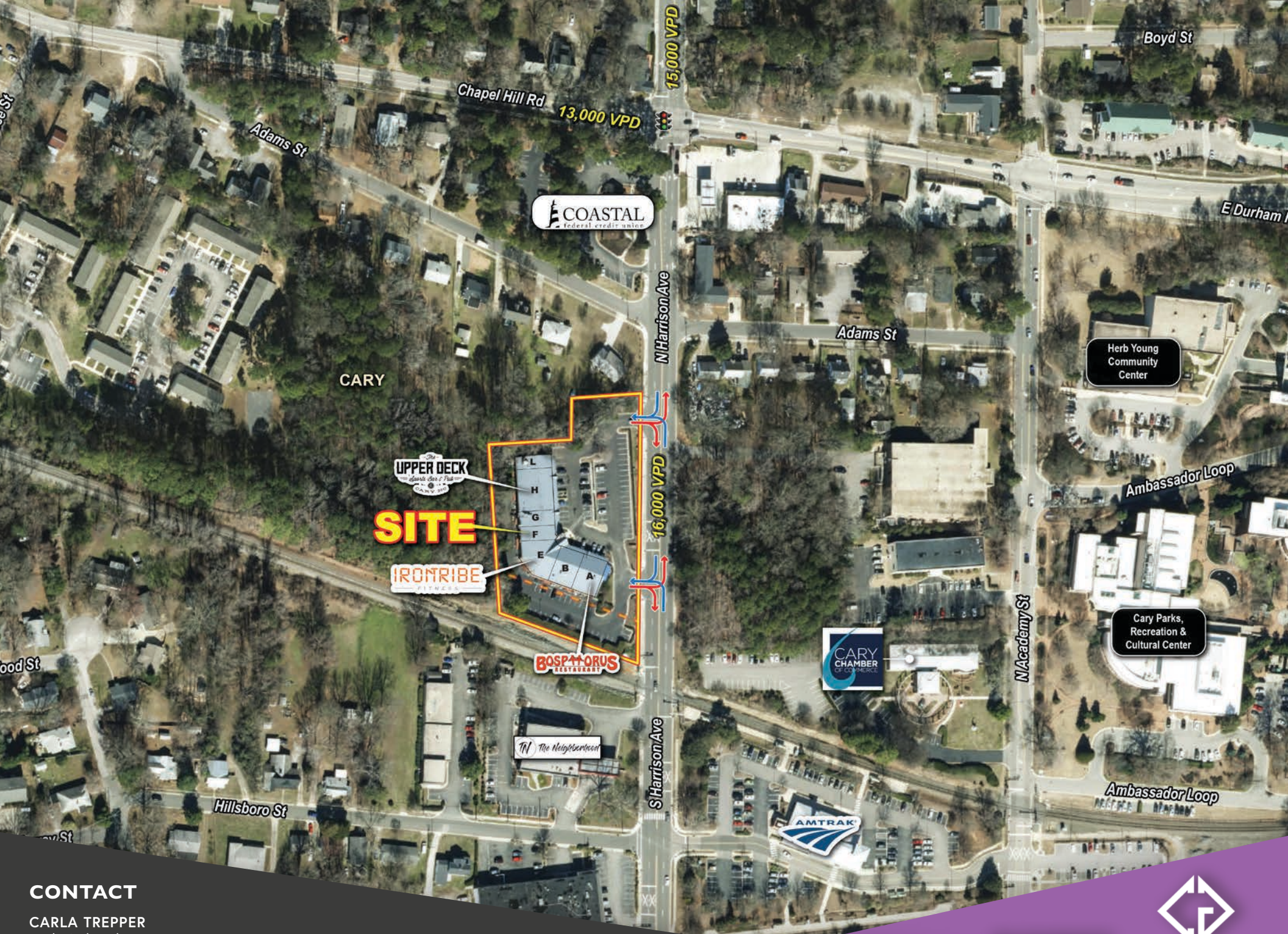
CONTACT

CARLA TREPPER
carla@chambers-group.com
(919) 900-2201

XTEAM
RETAIL ADVISORS



THE CHAMBERS GROUP
ACCELERATING RETAIL SUCCESS™

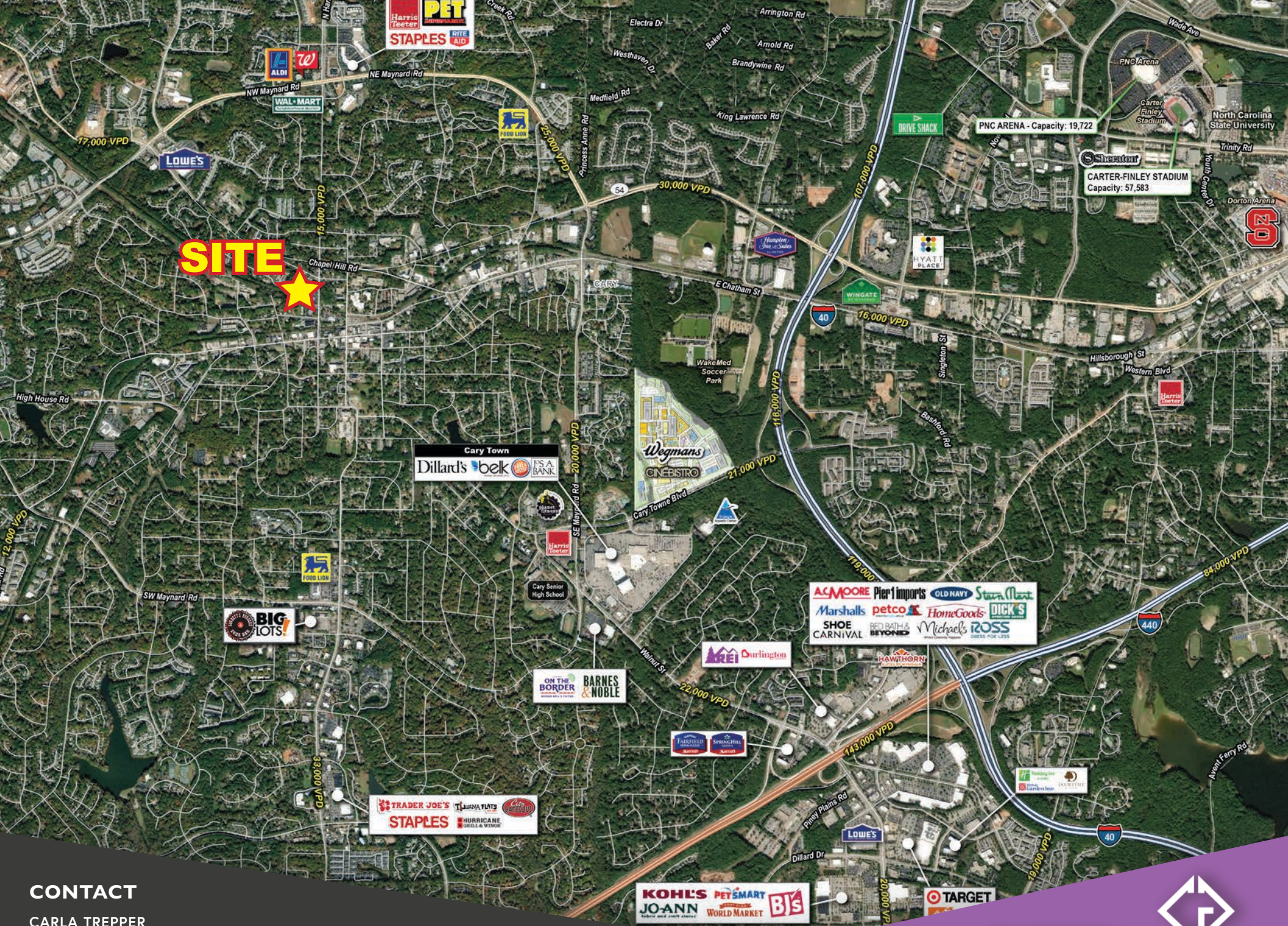


CONTACT

CARLA TREPPER
carla@chambers-group.com
(919) 900-2201



SITE



CONTACT

CARLA TREPPER
carla@chambers-group.com
(919) 900-2201

XTEAM
RETAIL ADVISORS


THE CHAMBERS GROUP
ACCELERATING RETAIL SUCCESS™