

NORTHSIDE SQUARE

1108 ABERDEEN RD. | LAURINBURG, NC 28352

FOR LEASE

FOOD  LION

CONTACT

IAN WHETSEL

ian@chambers-group.com

(704) 752-8350



THE CHAMBERS GROUP
ACCELERATING RETAIL SUCCESS™

MARKET OVERVIEW

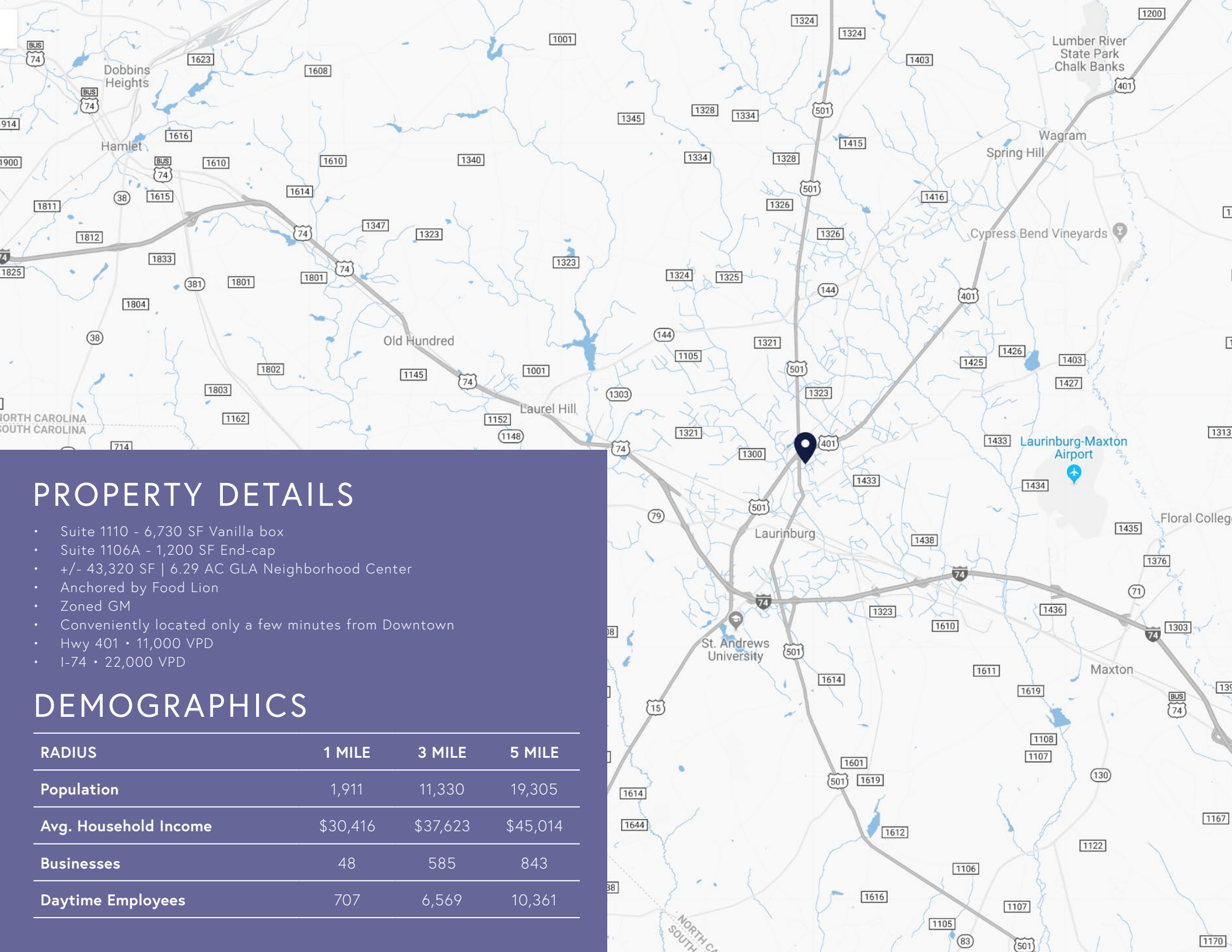
Laurinburg, North Carolina

Beneath the tall stately oaks lies Laurinburg, North Carolina. A three-time All America City located in the Sandhills region, Laurinburg offers the charm and quiet living of a small southern town with close proximity to larger cities, the mountains and the coast. Developing from its rich agricultural heritage, Laurinburg is still an agricultural community and it is also the progressive business and cultural center of Scotland County.

The lifestyle in Laurinburg is relaxed and laid back, but never boring – not with year-round outdoor recreation, a vibrant arts scene, progressive community services and close proximity to beaches, the mountains, big city attractions, and college and professional sports.

Laurinburg is located on US Highway 74, a major east-west four-lane highway, US Highway 401, a major north-south four-lane highway, and minutes away from Interstate 95 which runs from Maine to Florida. Also located just 43 miles from Fayetteville and Fort Bragg, Laurinburg is conveniently located for residential or business purposes for the expansion generated by Base Realignment and Closing (BRAC) and the impending growth of Fort Bragg.



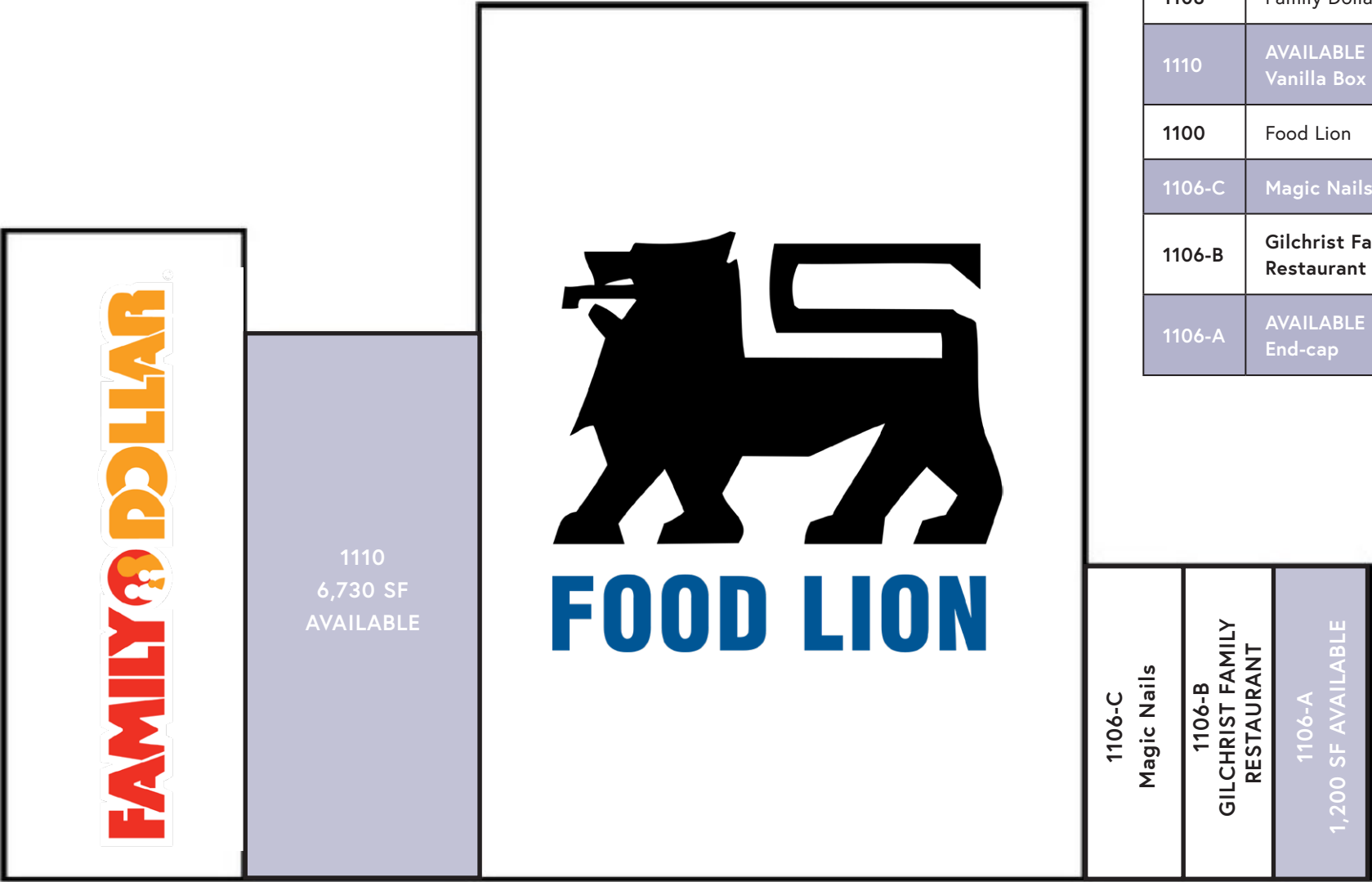


PROPERTY DETAILS

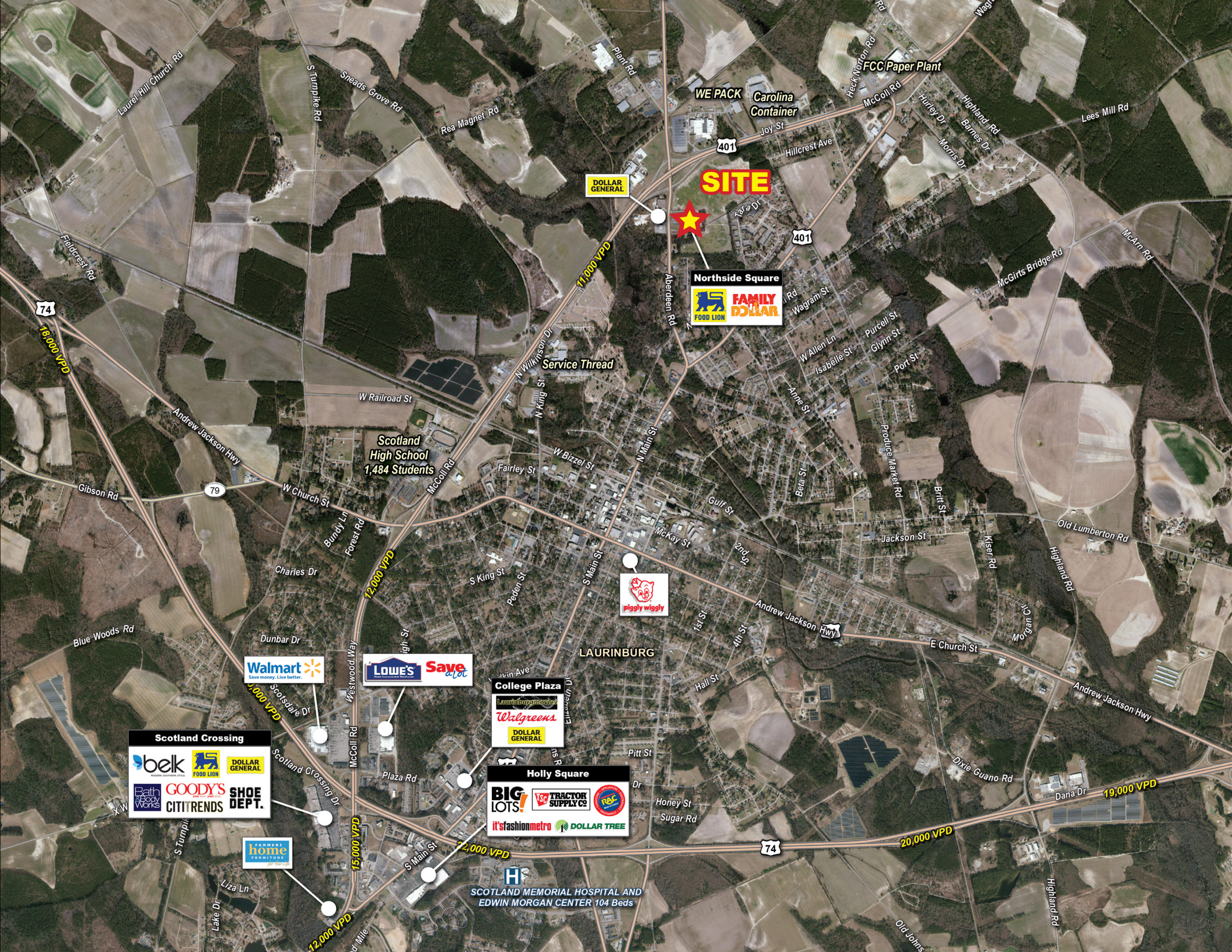
DEMOGRAPHICS

RADIUS	1 MILE	3 MILE	5 MILE
Population	1,911	11,330	19,305
Avg. Household Income	\$30,416	\$37,623	\$45,014
Businesses	48	585	843
Daytime Employees	707	6,569	10,361

SITE PLAN



TENANT ROSTER		
1108	Family Dollar	8,000 SF
1110	AVAILABLE Vanilla Box	6,730 SF
1100	Food Lion	25,000 SF
1106-C	Magic Nails	1,200 SF
1106-B	Gilchrist Family Restaurant	1,200 SF
1106-A	AVAILABLE End-cap	1,200 SF



SITE

Northside Square

FAMILY DOLLAR

FOOD LION

DOLLAR GENERAL

Service Thread

Scotland High School
1,484 Students

piggly wiggly

LAURINBURG

College Plaza

Walgreens

DOLLAR GENERAL

Holly Square

BIG LOTS

it's fashion metro

DOLLAR TREE

**SCOTLAND MEMORIAL HOSPITAL AND
EDWIN MORGAN CENTER 104 Beds**

Walmart

Save money. Live better.

LOWE'S

Save a lot

Scotland Crossing

belk

GOODY'S

SHOE DEPT.

CITITRENDS

FARMERS HOME



CONTACT FOR LEASING DETAILS

IAN WHETSEL

ian@chambers-group.com

(704) 752-8350

WWW.CHAMBERS-GROUP.COM • 1620 SCOTT AVENUE • CHARLOTTE, NC 28203



THE CHAMBERS GROUP
ACCELERATING RETAIL SUCCESS™