

# 6129 WESTGATE

6129 Westgate Road | Raleigh, NC 27617

For Lease



## CONTACT

TREVOR HUDSON  
trevor@chambers-group.com  
(919) 900-2201



THE CHAMBERS GROUP  
ACCELERATING RETAIL SUCCESS™



# MARKET OVERVIEW

## *Raleigh, North Carolina*

Raleigh was established as the capital of North Carolina in 1792 and is named after Sir Walter Raleigh. Nicknamed "The City of Oaks", Raleigh has experienced rapid growth in recent years and has an estimated current population of 510,175 with a median age of 33.1 and a median income of \$54,581. Major employers include Duke University and Duke Health Systems, the State of NC and Wake County Public Schools.

Part of the famed Research Triangle Park, Raleigh is home to a diverse and well-educated population. The city is home to NC State University, a leading research institution and Shaw University, the first African American college in the South. The NHL's Carolina Hurricanes play in Raleigh's PNC Arena as does the NC State men's basketball team.



## FAST FACTS

- *Top Ten Most Recession Resistant Cities (Smartasset 2020)*
- *#2 Best Quality of Life In The World (Numbeo's, 2020)*
- *#2 Best Places to Live (Livability, 2019)*
- *#2 Most Family-Friendly Cities (Forbes, 2019)*
- *#3 Best Places for Careers (Forbes, 2019)*
- *#8 Best Cities to Work From Home (Smartasset 2020)*



# PROPERTY OVERVIEW



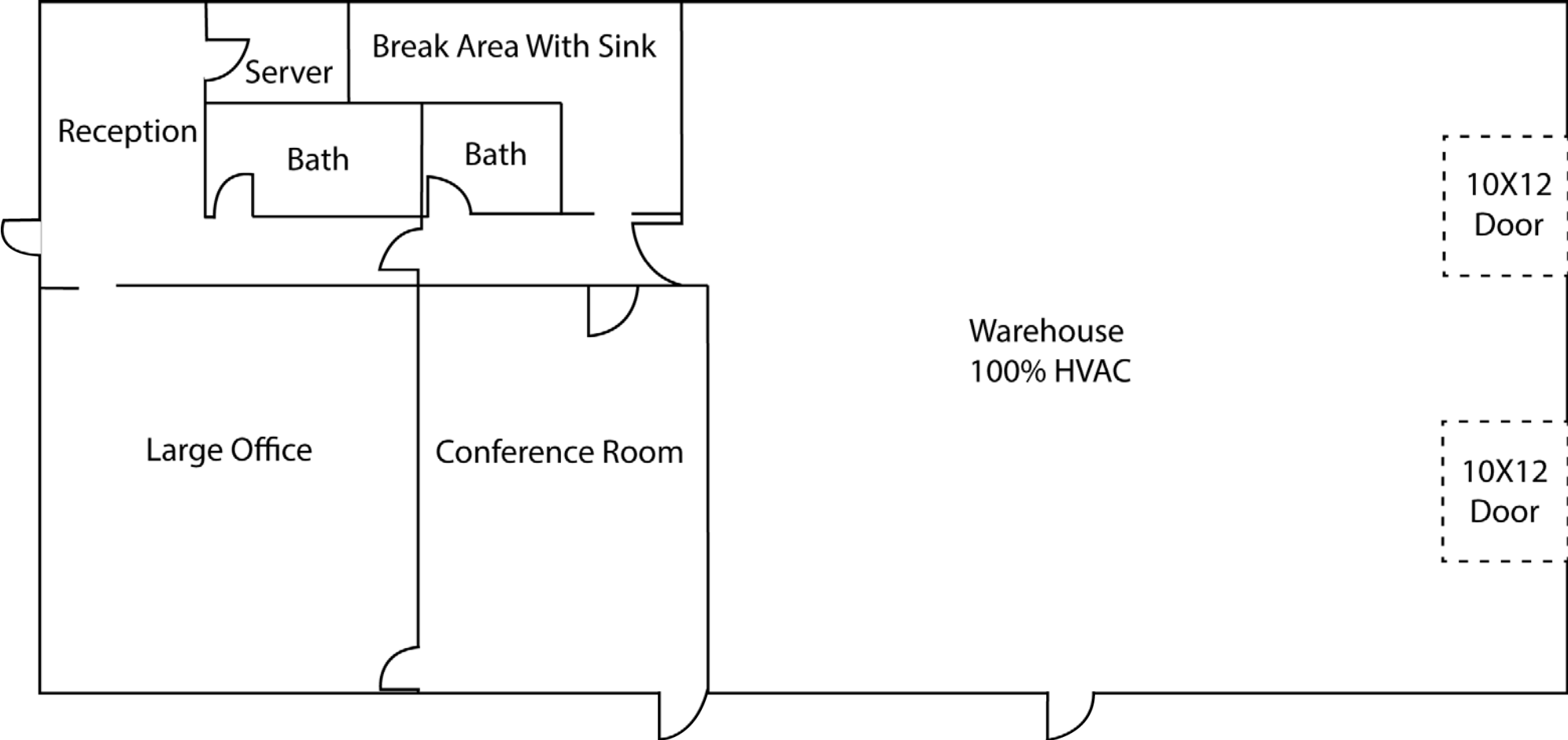
## PROPERTY DETAILS

- 4,500 SF Stand-alone flex building
- (2) Dock high roll-up doors,
- Multiple entrances: (1) for visitors and (2) for employees
- Gated lot
- Ample parking
- Easy access to major transportation arteries: I-540, I-40, and Hwy. 70
- Convenient to RDU, Research Triangle Park, and Brier Creek Development

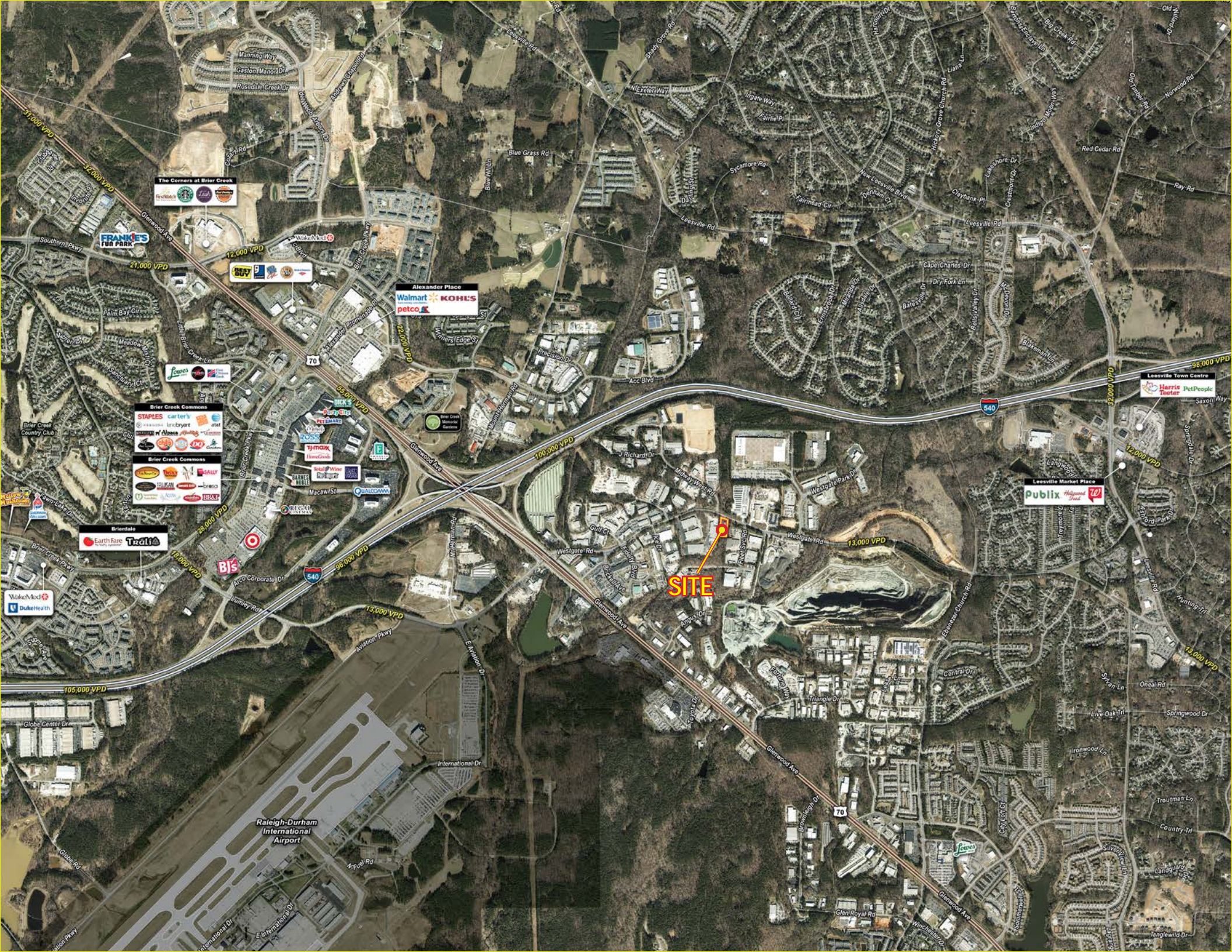
## DEMOGRAPHICS

| RADIUS     | 5 Minutes | 10 Minutes | 15 Minutes |
|------------|-----------|------------|------------|
| POPULATION | 14,195    | 90,902     | 275,081    |
| BUSINESSES | 1,181     | 4,269      | 13,088     |
| EMPLOYEES  | 14,850    | 65,780     | 182,546    |

# FLOOR PLAN







**SITE**

**The Corners at Brier Creek**

Logos for Dunkin', Starbucks, and other retailers.

**FRANKIE'S FUN PARK**

Logos for various recreational and food services.

**BUY**

Logos for retail and food services.

**Alexander Place**

Logos for Walmart, Kohl's, and Petco.

Logos for various retail and food services.

**Brier Creek Commons**

Logos for Staples, Carter's, and other retailers.

**Brier Creek Commons**

Logos for various retail and food services.

**Earth Fare**

**Trolli's**

**BJ's**

**Leesville Market Place**

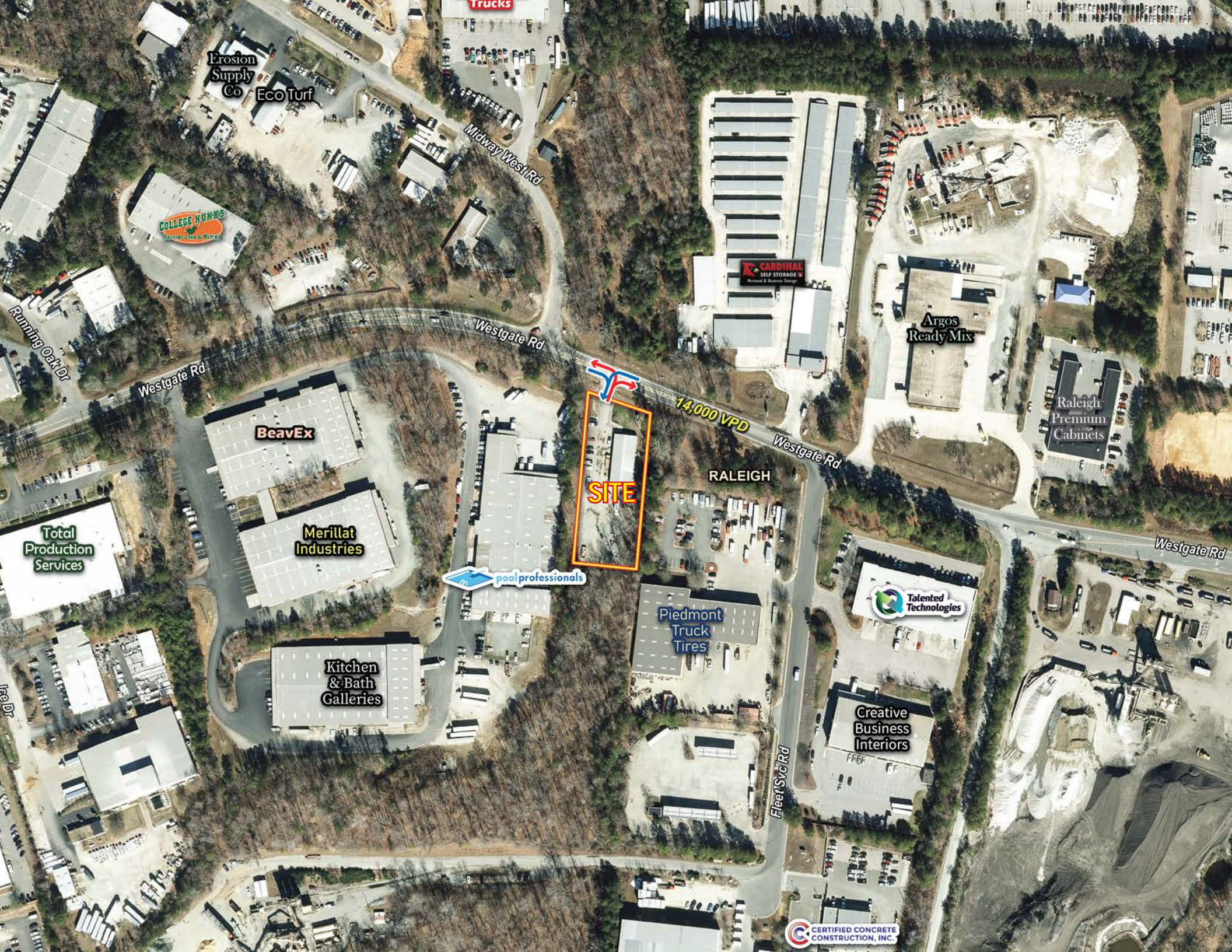
**Publix**

Raleigh-Durham International Airport

**Leesville Town Centre**

Logos for Harris PetPeople and other retailers.





Erosion  
Supply  
Co  
Eco Turf

Midway West Rd

COLLEGE HUNKS  
HAIRLINE JUNK & MOVING

Running Oak Dr

Westgate Rd

Westgate Rd

BeavEx

Total  
Production  
Services

Merillat  
Industries

SITE

14,000 VPD

Westgate Rd

RALEIGH

Argos  
Ready Mix

Raleigh  
Premium  
Cabinets

Westgate Rd

pool professionals

Piedmont  
Truck  
Tires

Talented  
Technologies

Kitchen  
& Bath  
Galleries

Creative  
Business  
Interiors

Fleet St Rd

CERTIFIED CONCRETE  
CONSTRUCTION, INC.





## CONTACT FOR LEASING DETAILS

**TREVOR HUDSON**

trevor@chambers-group.com  
(919) 980-2809



**THE CHAMBERS GROUP**  
ACCELERATING RETAIL SUCCESS™

[WWW.CHAMBERS-GROUP.COM](http://WWW.CHAMBERS-GROUP.COM) • 3733 NATIONAL DRIVE, SUITE 202 • RALEIGH, NC 27612

This information has been obtained from sources believed to be reliable. While we do not doubt its accuracy, we have not verified it and make no guarantee, warranty or representation to independently confirm its accuracy and completeness.