

FT. MILL HWY 160 & LEN PATTERSON OUTPARCEL

2314 LEN PATTERSON RD. | FORT MILL, SC 29708

BUILD-TO-SUIT



CONTACT

IAN WHETSEL
ian@chambers-group.com
(980) 348-9070

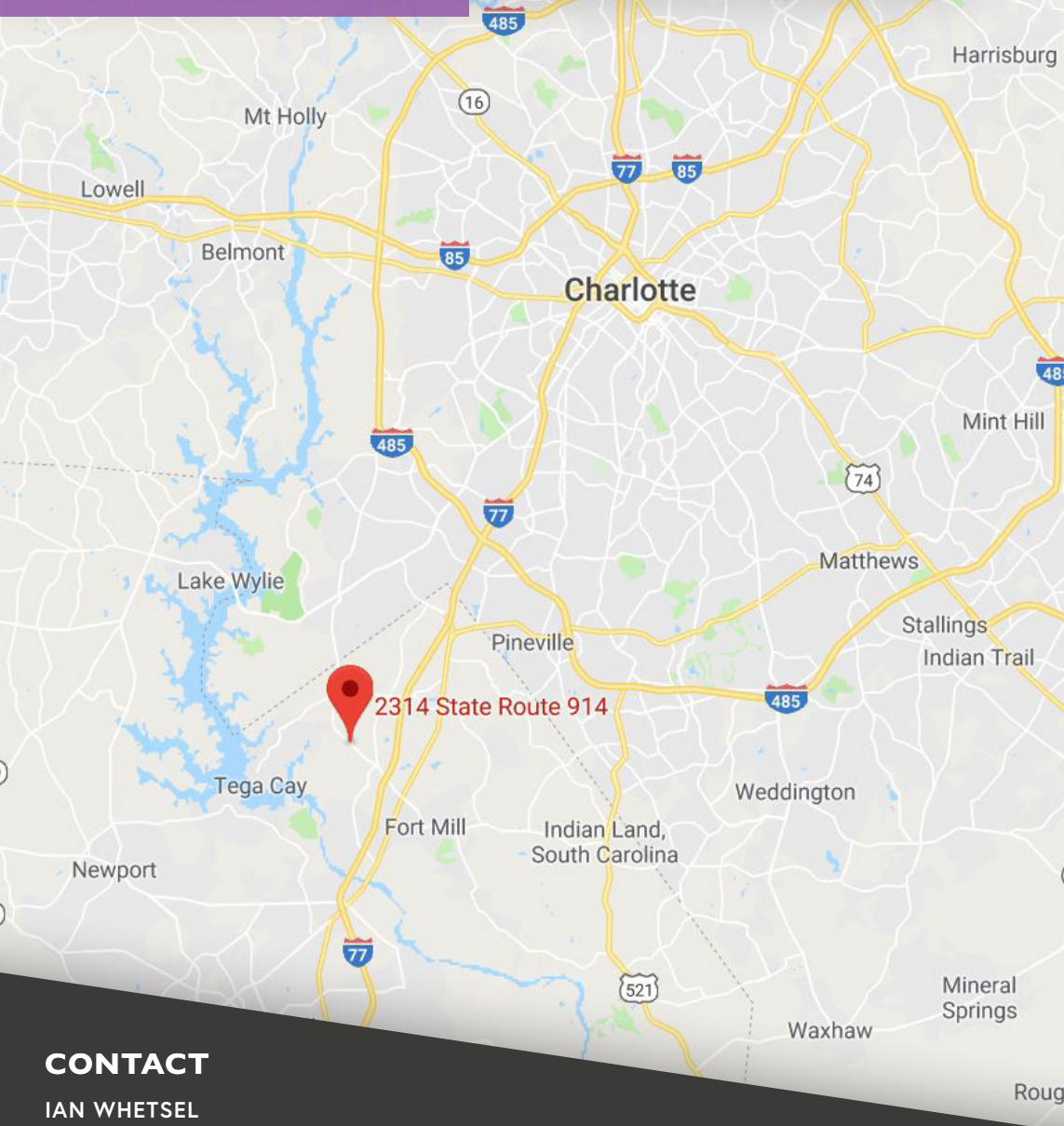


THE CHAMBERS GROUP
ACCELERATING RETAIL SUCCESS™

FT. MILL HWY 160 & LEN PATTERSON OUTPARCEL

2314 LEN PATTERSON RD. | FORT MILL, SC 29708

PROPERTY OVERVIEW



CONTACT

IAN WHETSEL
ian@chambers-group.com
(980) 348-9070




PROPERTY DETAILS

- ± 1 Acre Available for Build-to-Suit, Ground Lease, or Sale
- Great visibility located off Highway 160, Ft. Mill's main retail corridor
- Outparcel possibility next to Mills Crossing, Earth Fare and Pet Supplies Plus
- Over 30,000 vehicles travel this route daily in one of South Carolina's fastest growing markets
- Potential site for automotive or daycare uses

MARKET DETAILS

Fort Mill is a town in York County located south of Charlotte, NC and north of Rock Hill, SC. The town is home to notable business headquarters such as LPL Financial, Shutterfly, Red Ventures, and Movement Mortgage.

DEMOGRAPHICS

	1 MILE	3 MILE	5 MILE
 POPULATION	6,515	42,372	101,842
 AVG. HH INCOME	\$109,861	\$114,884	\$100,787
 EMPLOYEES	1,772	11,112	29,987



THE CHAMBERS GROUP
ACCELERATING RETAIL SUCCESS™

FT. MILL HWY 160 & LEN PATTERSON OUTPARCEL

2314 LEN PATTERSON RD. | FORT MILL, SC 29708

SITE PLAN



CONTACT

IAN WHETSEL
ian@chambers-group.com
(980) 348-9070



THE CHAMBERS GROUP
ACCELERATING RETAIL SUCCESS™



IVYBROOK
ACADEMY

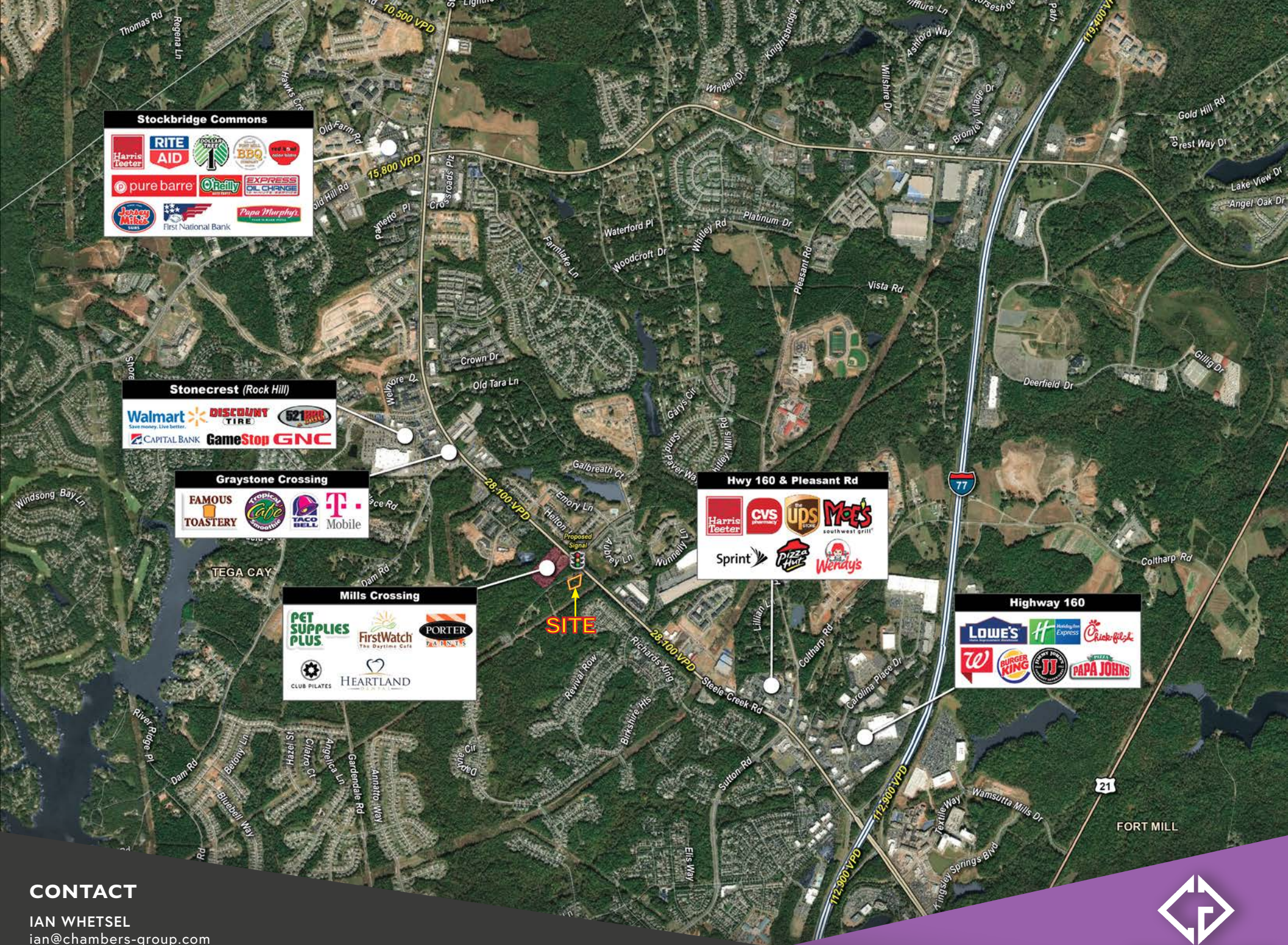


CONTACT

IAN WHETSEL
ian@chambers-group.com
(980) 348-9070



THE CHAMBERS GROUP
ACCELERATING RETAIL SUCCESS™



Stockbridge Commons



Stonecrest (Rock Hill)



Graystone Crossing



Mills Crossing



Hwy 160 & Pleasant Rd



Highway 160



CONTACT

IAN WHETSEL
ian@chambers-group.com
(980) 348-9070



THE CHAMBERS GROUP
ACCELERATING RETAIL SUCCESS™