

GOLD'S GYM PLAZA

3116 RANDLEMAN RD | GREENSBORO, NC 27406

FOR LEASE



CONTACT

CARLA TREPPER

carla@chambers-group.com
(919) 900-2201

ERIC SWEET

eric@chambers-group.com
(919) 980-2809



THE CHAMBERS GROUP
ACCELERATING RETAIL SUCCESS™

MARKET OVERVIEW

Greensboro, North Carolina

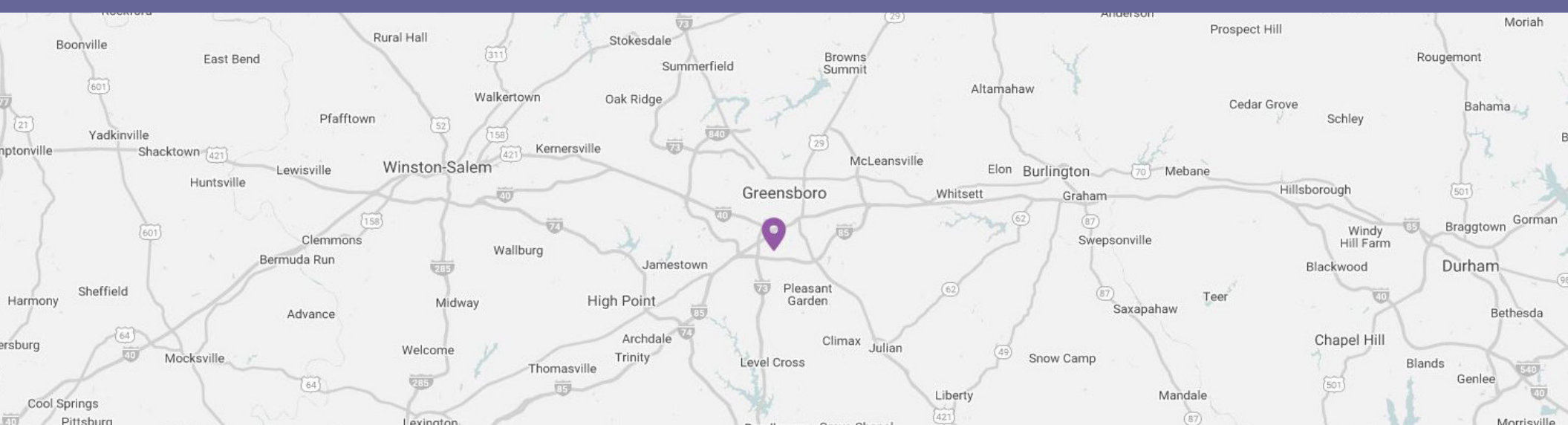
Located in Guilford County, Greensboro is named for Major General Nathanael Greene, the commander of American forces at the Battle of Guilford Court House in 1781. The city has a population of 294,726 making it the 3rd largest city by population in North Carolina. The median age of Greensboro residents is 35.6 and the median household income is \$45,787. Many international and national companies are headquartered in Greensboro including Holda Aircraft Co., VF Corporation, Volvo Truck of North America, RF Micro Devices, the International Textile Group, NewBridge Bank, Cook Out, Biscuitville and Gilbarco Veeder-Root.

Greensboro has numerous colleges and universities most notably, University of North Carolina at Greensboro, North Carolina Agricultural & Technology, Guilford College and Guilford Technical Community College. Greensboro is also the headquarters for the ACC. The Greensboro Colliseum has played host to ACC Men's Basketball Tournament 23 times, more than any other venue. The colliseum has hosted concerts and events ranging from Elvis Presley, Aretha Franklin, and LL Cool J to Monster Jam, professional wrestling and a town hall meeting with then presidential candidate Barack Obama.

Downtown Greensboro



PROPERTY OVERVIEW

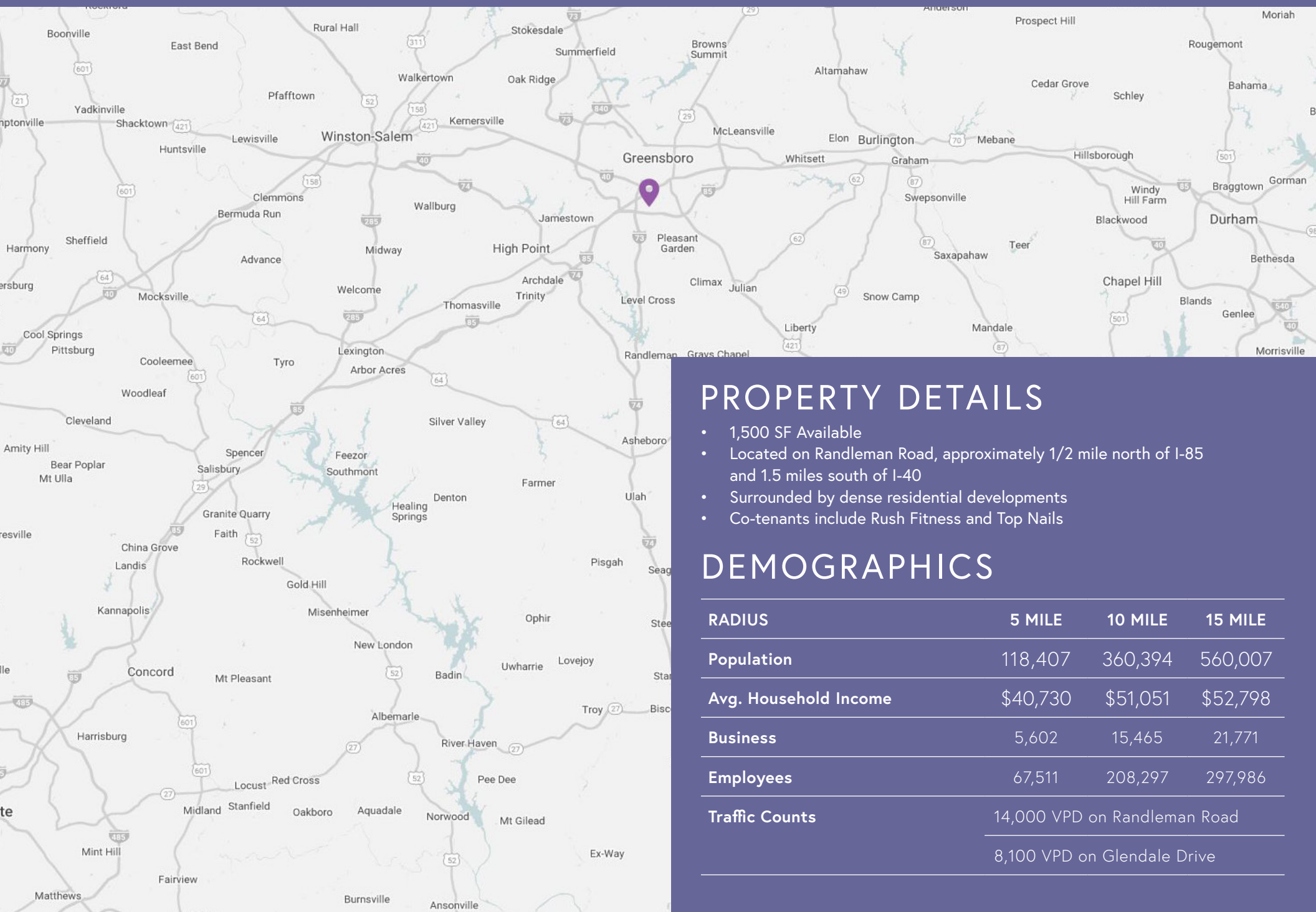


PROPERTY DETAILS

- 1,500 SF Available
- Located on Randleman Road, approximately 1/2 mile north of I-85 and 1.5 miles south of I-40
- Surrounded by dense residential developments
- Co-tenants include Rush Fitness and Top Nails

DEMOGRAPHICS

RADIUS	5 MILE	10 MILE	15 MILE
Population	118,407	360,394	560,007
Avg. Household Income	\$40,730	\$51,051	\$52,798
Business	5,602	15,465	21,771
Employees	67,511	208,297	297,986
Traffic Counts	14,000 VPD on Randleman Road		
	8,100 VPD on Glendale Drive		



PROPERTY DETAILS

- 1,500 SF Available
- Located on Randleman Road, approximately 1/2 mile north of I-85 and 1.5 miles south of I-40
- Surrounded by dense residential developments
- Co-tenants include Rush Fitness and Top Nails

DEMOGRAPHICS

RADIUS	5 MILE	10 MILE	15 MILE
Population	118,407	360,394	560,007
Avg. Household Income	\$40,730	\$51,051	\$52,798
Business	5,602	15,465	21,771
Employees	67,511	208,297	297,986
Traffic Counts	14,000 VPD on Randleman Road		
	8,100 VPD on Glendale Drive		

Meadow Park Ct

Glendale Dr

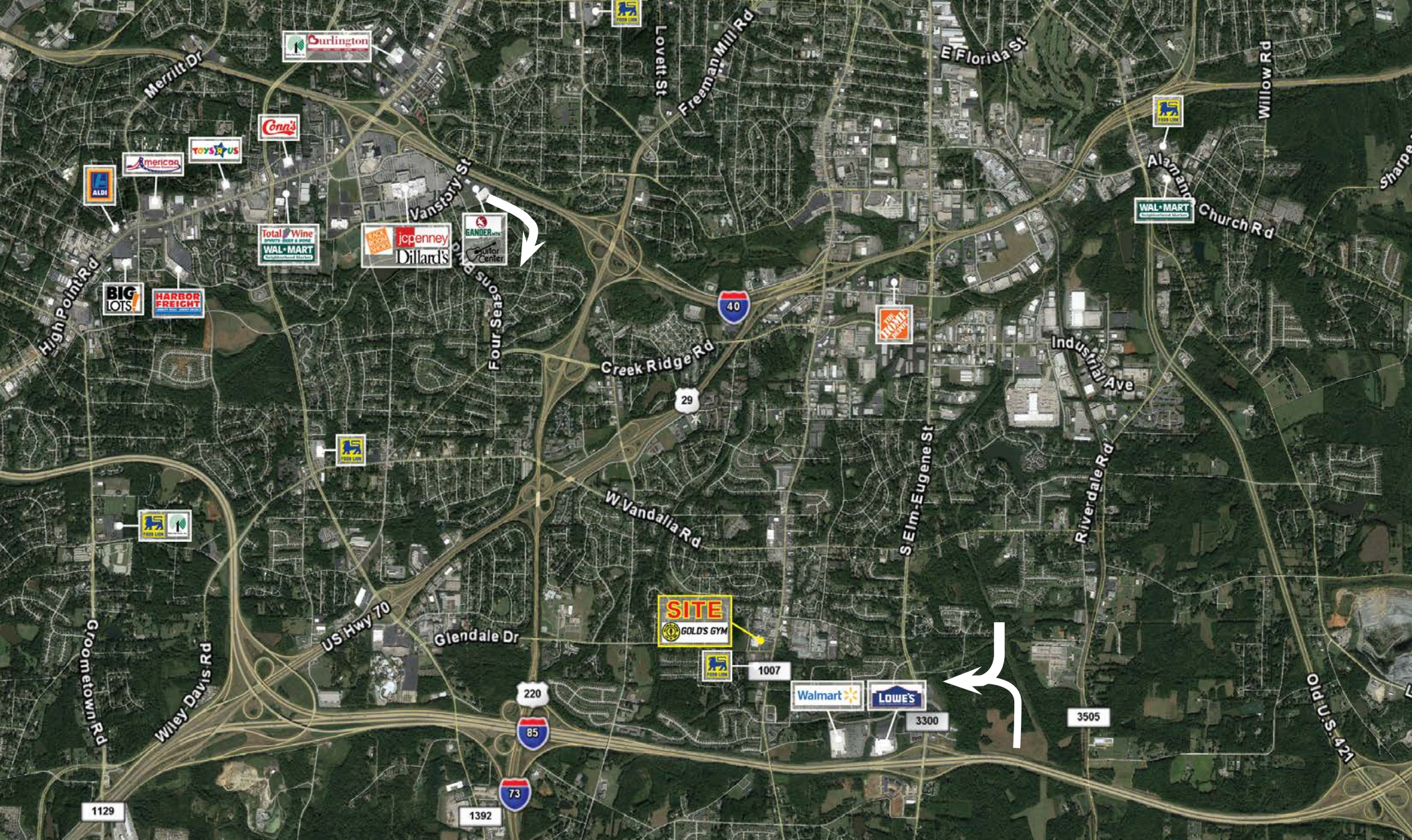
8,100 VPD

Randleman Rd

17,000 VPD



1007



CONTACT FOR LEASING DETAILS

CARLA TREPPER

carla@chambers-group.com
(919) 900-2201

ERIC SWEET

eric@chambers-group.com
(919) 980-2809



THE CHAMBERS GROUP
ACCELERATING RETAIL SUCCESS™

WWW.CHAMBERS-GROUP.COM • 3733 NATIONAL DRIVE, SUITE 202 • RALEIGH, NC 27612

This information has been obtained from sources believed to be reliable. While we do not doubt its accuracy, we have not verified it and make no guarantee, warranty or representation to independently confirm its accuracy and completeness.