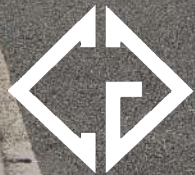


OLLIE'S BARGAIN OUTLET PLAZA

2137 NORTH CHURCH STREET | BURLINGTON, NC 27217



THE CHAMBERS GROUP
ACCELERATING RETAIL SUCCESS™



OLLIE'S BARGAIN OUTLET PLAZA

2137 North Church Street | Burlington, NC 27217



MARKET DETAILS

- Burlington is a part of the Greensboro-Winston-Salem-High Point CSA
- Burlington is only 35 miles from Piedmont Triad International Airport in Greensboro and about 48 miles from Raleigh-Durham International Airport in Morrisville
- LabCorp has its headquarters in Burlington and is Alamance County's largest employer, employing over 3,000 people in the county

DEMOGRAPHICS

EST. POPULATION	AVG. HH INCOME	TOTAL HOUSEHOLDS
7,972 1 mi	\$43,707 1 mi	2,762 1 mi
44,249 3 mi	\$44,530 3 mi	17,278 3 mi
79,564 5 mi	\$53,159 5 mi	32,032 5 mi



THE CHAMBERS GROUP
ACCELERATING RETAIL SUCCESS™

For more info, please contact:

CARLA TREPPER
carla@chambers-group.com
(919) 900-2201

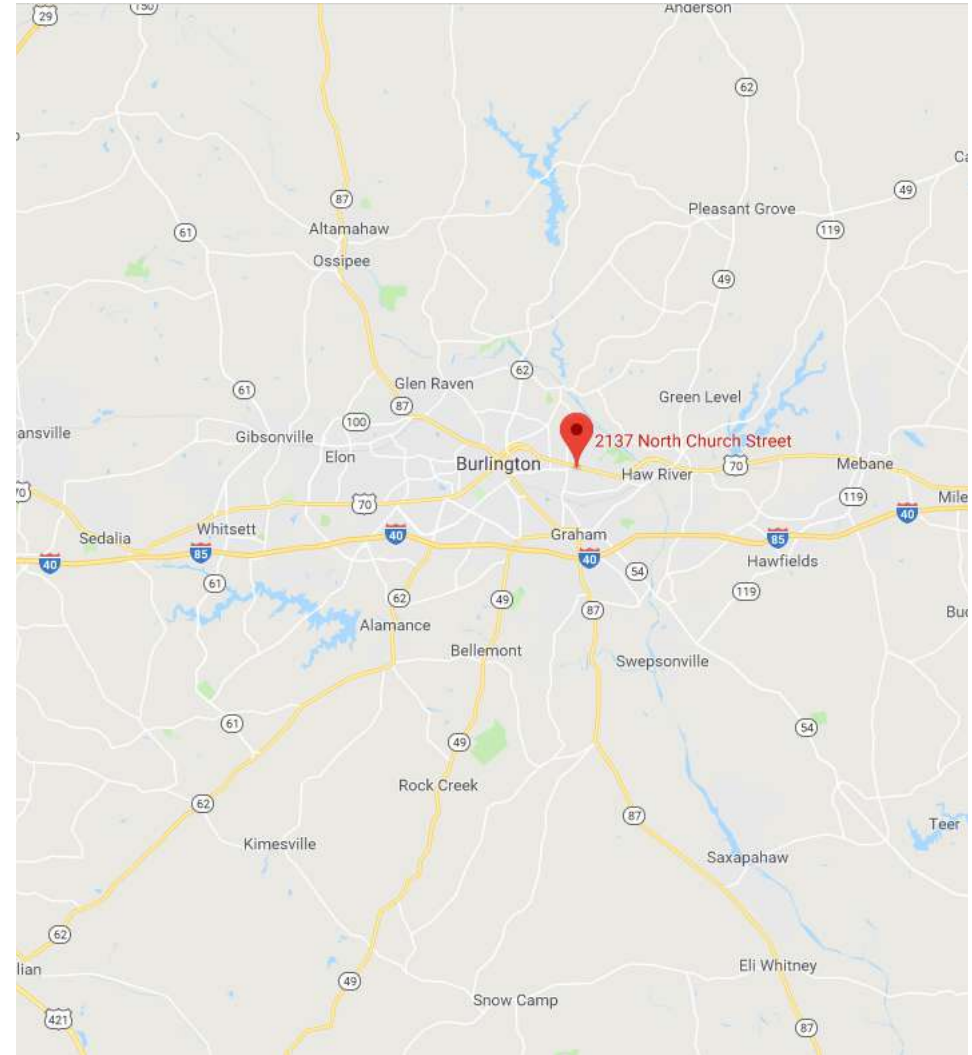
JENN OLEVITCH-ROBERSON
carla@chambers-group.com
(919) 900-2201

OLLIE'S BARGAIN OUTLET PLAZA

2137 North Church Street | Burlington, NC 27217

PROPERTY DETAILS

- 15,000sf Available for Lease
- Neighboring tenants include Ollie's Bargain Outlet, Dollar General, Aaron's, and a Wells Fargo ATM
- Excellent visibility on a main thoroughfare in Burlington
- N. Church St. - 19,000 VPD
- N. Sellars Mill Rd. - 4,000 VPD



THE CHAMBERS GROUP
ACCELERATING RETAIL SUCCESSSM

CARLA TREPPER
carla@chambers-group.com
(919) 900-2201





For more info, please contact:
JENN OLEVITCH-ROBERSON
carla@chambers-group.com
(919) 900-2201

OLLIE'S BARGAIN OUTLET PLAZA

2137 North Church Street | Burlington, NC 27217

TENANT ROSTER

- 1 Aaron's
- 2 Feeling Lucky Internet Cafe
- 3 Save-a-Lot
- 4 Ollie's Bargain Outlet
- 5 AVAILABLE 15,000
- 6 Dollar General

	<p>Feeling Lucky Internet Cafe</p>			<p>AVAILABLE 15,000sf</p>	
---	--	--	--	-------------------------------	---



THE CHAMBERS GROUP
ACCELERATING RETAIL SUCCESS™

CARLA TREPPER
carla@chambers-group.com
(919) 900-2201

For more info, please contact:
JENN OLEVITCH-ROBERSON
carla@chambers-group.com
(919) 900-2201

*The information herein has been obtained from sources believed to be reliable. While we do not doubt its accuracy, we have not verified it and make no guarantee, warranty, or representation about it. It is your responsibility to independently confirm its accuracy and completeness.

OLLIE'S BARGAIN OUTLET PLAZA

2137 North Church Street | Burlington, NC 27217



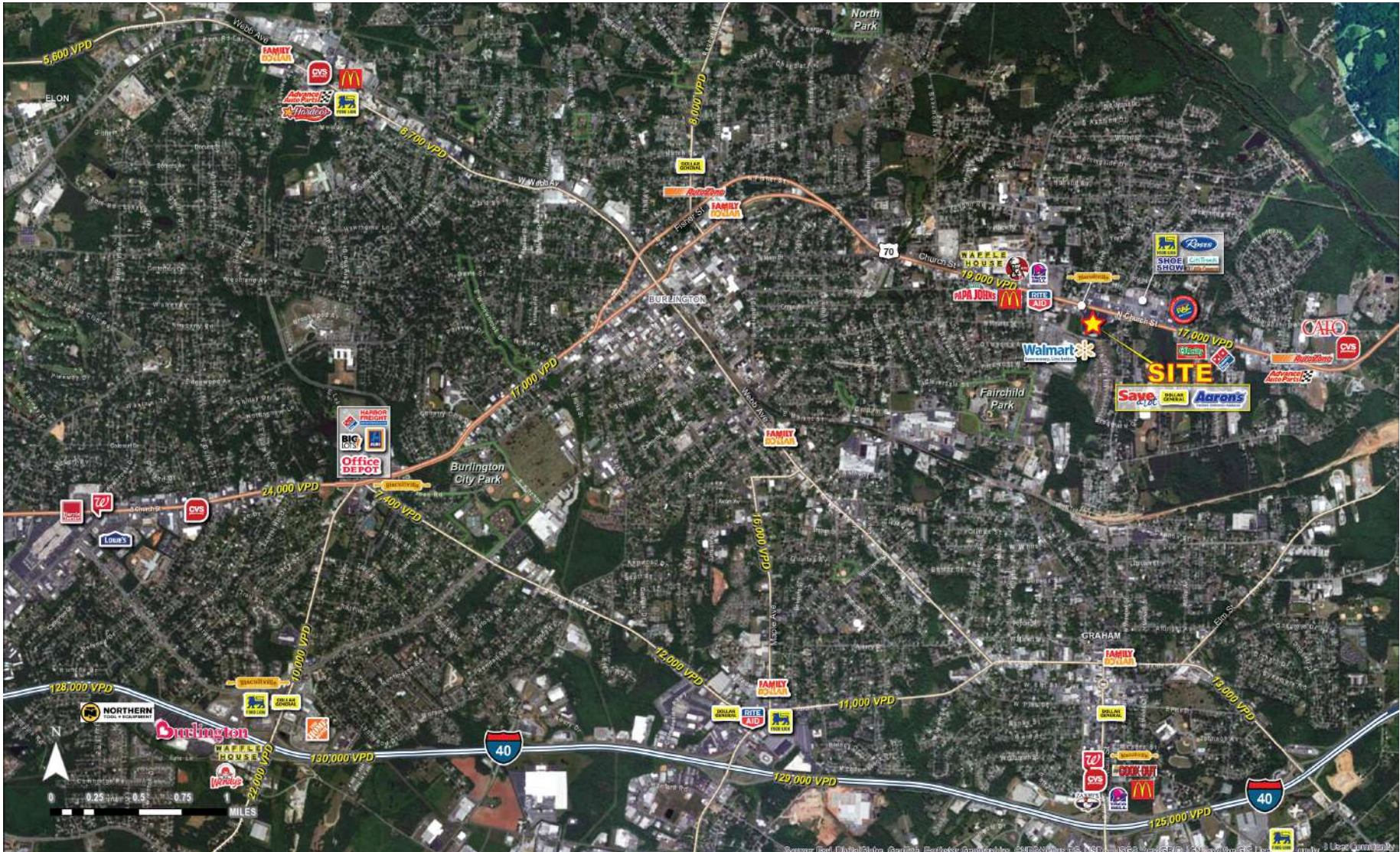
THE CHAMBERS GROUP
ACCELERATING RETAIL SUCCESS™

CARLA TREPPER
carla@chambers-group.com
(919) 900-2201

For more info, please contact:
JENN OLEVITCH-ROBERSON
carla@chambers-group.com
(919) 900-2201

OLLIE'S BARGAIN OUTLET PLAZA

2137 North Church Street | Burlington, NC 27217



THE CHAMBERS GROUP
ACCELERATING RETAIL SUCCESS™

CARLA TREPPER
carla@chambers-group.com
(919) 900-2201

For more info, please contact:
JENN OLEVITCH-ROBERSON
carla@chambers-group.com
(919) 900-2201